

DOOR HARDWARE BUYERS GUIDE

strongware
DOOR & WASHROOM
HARDWARE

Suppliers of innovative building products
Quality, Efficiency, Versatility, Innovation

CONTENTS

Our range of door hardware is commercial grade unless specifically indicated otherwise. We offer a door by door scheduling service, and can pack orders door by door if requested, at no charge. This ensures your project meets Australian building code standards.

Standard finish is satin chrome or satin stainless, other finishes are available on most items, such as polished chrome, powdercoat and brass. Commercial items have a limited warranty for 10 years, and items marked as domestic 5 years.

Most products are fire rated however we need to know the door supplier prior to quoting, as each manufacturer tests hardware to suit their doors.

LOCKS	3
LOCKSETS	4
LEVERS	5
LATCHES	6
HANDLES	7
SEALS	8
BOLTS	9
CLOSERS	9
HINGES	10
STOPS	10
ANCILLARY	11

60MM BACKSET MORTICE LOCKS



HN6100

CODE	DESCRIPTION
HN6100	Swing door lock
HN6400	Deadlock
HN6500	Sliding door lock
HDRBT	Rebate kit for rebated double doorsets
HLAF01	Aluminium door fixing kit

Other backsets available on request



HN6400



HN6500

23MM BACKSET ALUMINIUM DOOR LOCKS



HN3100

CODE	DESCRIPTION
HN3100	Swing door lock
HN590	Deadlock
HN591	Sliding door lock
HK312T	Egress compliant turn
HCT	Cylinder turn

Other backsets available on request



HN590



HN591



HK312T



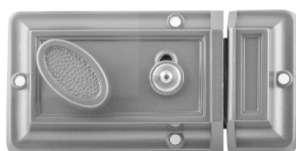
HCT

FACE FIX NIGHTLATCHES



HA454

CODE	DESCRIPTION
HA454	Nightlatch w/rim cyl
HR050	Domestic nightlatch w/rim cyl



HR050

FACE FIX TUBULAR DEADBOLTS



HR881

CODE	DESCRIPTION
HR911	Cyl & turn deadbolt
HR881	Double cylinder deadbolt

CYLINDERS & ADAPTORS

CODE	DESCRIPTION
	Our lock cylinders are supplied keyed alike, keyed to differ or master keyed. The relevant cam & adaptor is supplied to suit the function required.

LOCKSETS

Commercial grade fire rated key in lever lockset



CODE	DESCRIPTION
HT8000	Entrance
HT8012	Classroom
HT8062	Storeroom
HT8082	Passage

Domestic grade key in lever lockset (keyed alike or to differ, cannot be rekeyed)



HR4710

CODE	DESCRIPTION
HR4710	Entrance
HR4810	Passage
HR4910	Privacy

LEVERS - ROUND ROSE

All our lever options are accessible compliant



HB35



HB40

CODE	DESCRIPTION
HB35	35 lever on round rose
HB40	40 lever on round rose
HB45	45 lever on round rose
HB50	50 lever on round rose
HB06	Accessible compliant turn round rose
HB07	Turn round rose
HB08	Escutcheon round rose
HB09	Indicating emergency release round rose



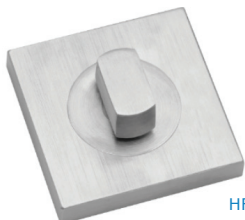
HB45



HB50

LEVERS - SQUARE ROSE

All our lever options are accessible compliant



HF07



HF08



HF09

CODE	DESCRIPTION
HF35	35 lever on square rose
HF40	40 lever on square rose
HF45	45 lever on square rose
HF50	50 lever on square rose
HF06	Accessible compliant turn square rose
HF07	Turn square rose
HF08	Escutcheon square rose
HF09	Indicating emergency release square rose

PLATE FURNITURE

External & internal plate furniture is sold separately depending on the function, as follows:



External

CODE	DESCRIPTION
H01	Lever & cyl hole
H02	Lever
H03	Lever & indicating emergency release

Internal (vis fix)

CODE	DESCRIPTION
H04	Lever & cyl hole
H05	Lever
H06	Lever & turn
H07	Lever & Accessible compliant turn

The 4 lever options are all available on the above plates, and the following plate styles are available:

Rectangular square end "R"
Rectangular round end "S"

ALUMINIUM DOOR PLATE FURNITURE

Lever 50 only available.



Narrow plate square end "P"
Narrow plate round end "Q"

External

CODE	DESCRIPTION
H01	Lever & cyl hole
H02	Lever

Internal (vis fix)

CODE	DESCRIPTION
H04	Lever & cyl hole
H05	Lever
H06	Lever & turn

ORDERING PROCEDURE

Prefix H(hardware) followed by plate style P,Q,R or S followed by function 01-07 followed by lever styles 35-50 eg HR0150(50 lever on rectangular square end external plate & cyl hole)

LATCHES



CODE	DESCRIPTION
HN12905	Tubular latch 60mm backset incl strike
HN12907	Tubular bolt 60mm backset incl plate (commonly used with HB06 & HB09)
HFSK6600	Flat strikeplate (used on aluminium jambs)



HANDLES

Round handles made from 32mm tube, square handles from 25mm tube.



HRD600



HROD600



HRB600



HRH600



HSD600



HSOD600

CODE	DESCRIPTION
HRD300	Round D 300mm
HRD450	Round D 450mm
HRD600	Round D 600mm
HROD300	Round offset D 300mm
HROD450	Round offset D 450mm
HROD600	Round offset D 600mm
HRB600	Round curved D 600mm
HRH450	Round H 450mm
HRH600	Round H 600mm
HRH1000	Round H 1000mm
HRH1200	Round H 1200mm
HSD300	Square D 300mm
HSD450	Square D 450mm
HSD600	Square D 600mm
HSOD300	Square offset D 300mm
HSOD450	Square offset D 450mm
HSOD600	Square offset D 600mm
HSOD1000	Square offset D 1000mm

PUSH / PULL PLATES



HPPS75

CODE	DESCRIPTION
HPPS75	300x75mm push/pull plate set visible fix both sides
HPHV100	300x100mm handle on plate visible fix
HPV100	300x100mm plate visible fix
HPHC100	300x100mm handle on plate concealed fix
HPC100	300x100mm plate concealed fix

D PULLS



HDP15016

CODE	DESCRIPTION
HDP15016	16mm round D pull 150mm single side (used for cupboards)

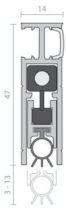
SEALS

Standard finish natural anodised, other finishes are available



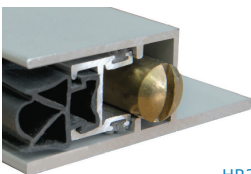
HR872

CODE	DESCRIPTION
HR872	Concealed drop seal 720mm
HR882	Concealed drop seal 820mm
HR892	Concealed drop seal 920mm
HR8107	Concealed drop seal 1070mm
HR8122	Concealed drop seal 1220mm



HR3572

CODE	DESCRIPTION
HR3572	Face fix drop seal 720mm
HR3582	Face fix drop seal 820mm
HR3592	Face fix drop seal 920mm
HR35107	Face fix drop seal 1070mm
HR35122	Face fix drop seal 1220mm



HR3882

CODE	DESCRIPTION
HR3882	Heavy duty face fix drop seal 820mm
HR3892	Heavy duty face fix drop seal 920mm
HR38107	Heavy duty face fix drop seal 1070mm
HR38122	Heavy duty face fix drop seal 1220mm



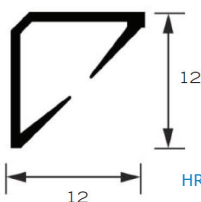
HR1021S

CODE	DESCRIPTION
HR1021S	Perimeter seal single set (2/2100,1/1000mm)
HR1021D	Perimeter seal double set (3/2100mm)
HR1027S	Perimeter seal long single set (2/2700,1/1000mm)
HR1027D	Perimeter seal long double set (2/2700,1/2000mm)



HR7821S

CODE	DESCRIPTION
HR7821S	Compact Perimeter seal single set (2/2100,1/1000mm)
HR7821D	Compact Perimeter seal double set (3/2100mm)
HR7827S	Compact Perimeter seal long single set (2/2700,1/1000mm)
HR7827D	Compact Perimeter seal long double set (2/2700,1/2000mm)



HR12021S

CODE	DESCRIPTION
HR12021S	Adhesive batwing seal single set(2/2100,1/1000mm)
HR12021D	Adhesive batwing seal double set(3/2100mm)
HR12027S	Adhesive batwing seal long single set(2/2700,1/1000mm)
HR12027D	Adhesive batwing seal long double set(2/2700,1/2000mm)

BOLTS



HPBC300

Face fix panic bolts

CODE	DESCRIPTION
HPB300	300mm visible fix
HPB450	450mm visible fix
HPB600	600mm visible fix
HPBC300	300mm concealed fix
HPBC450	450mm concealed fix
HPBC600	600mm concealed fix



HTFB200

Timber door flush bolts

CODE	DESCRIPTION
HTFB200	200mm
HTFH300	300mm
HTFB450	450mm



HAFB600

Aluminium door flush bolts

CODE	DESCRIPTION
HAFB300	300mm
HAFB600	600mm

CLOSERS



HDC3S

CODE	DESCRIPTION
HDC3S	Medium duty standard arm door closer w/backcheck
HDC3T	Medium duty track arm door closer w/backcheck & hold open
HDC4SD	Heavy duty standard arm door closer w/delayed action (for Accessible toilets)
HDC5S	Heavy duty standard arm door closer w/backcheck (for external doors)
HTCS3	Heavy duty transom closer (specify hold open or non HO)



HDC3T



HDC5S



HTCS3

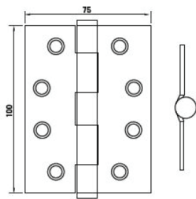
HINGES



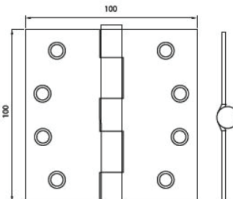
HFFH



HFFWH130



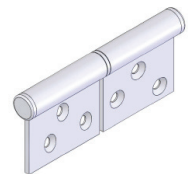
HSSBH75



HSSBH100



HVFS150



HFFLO

CODE	DESCRIPTION
HSSFFH	Stainless steel fast fix hinge 100x75mm
HFFKH	Stainless steel kinked fast fix hinge (for timber doors, eliminates binding)
HFFH	Aluminium fast fix hinge 100x75mm
HHFTH	Aluminium tapered fast fix hinge (for timber doors, eliminates binding)
HFFWH100	Aluminium winged hinge 100x75mm
HFFWH110	Aluminium winged hinge 110x80mm
HFFWH130	Aluminium winged hinge 130x80mm (heaviest duty for large glazed doors)
HSSBH75	Stainless steel ball bearing butt hinge 100x75mm
HSSBHL75	Stainless steel loose pin butt hinge 100x75mm
HSSBH100	Stainless steel ball bearing butt hinge 100x100mm
HVFS150	150kg rated Floor spring HO 90 degrees both ways
HFFLO	Stainless steel universal fast fix lift off hinge *no need to order left & right hand

STOPS



HDS250



HDS280



HDS290



HDS350



HL857

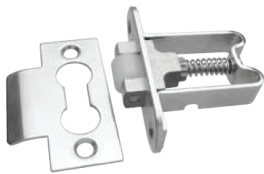
CODE	DESCRIPTION
HDS250	Triangular base floor mount
HDS280	Round floor mount
HDS290	Half moon floor mount
HDS350	Cylindrical wall mount
HL857	Drop down door holder

ANCILLARY

1.2mm Stainless steel kickplates are available made to order, plain or with countersunk fixing holes



HBBC



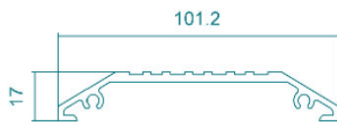
HMRB

Catches

CODE	DESCRIPTION
HBBC	Brass ball catch
HMRB	Mortice roller catch (commonly used with single sided D pull for cupboards)



HT100R



HT100H

Thresholds

CODE	DESCRIPTION
HT100R	100x15mm "ramp" threshold natural anodised
HT100H	100x15mm "hump" threshold natural anodised



HFP14540



HFP15045

Flush pulls

CODE	DESCRIPTION
HFP11530	115x30mm flush pull
HFP14540	145x40mm flush pull
HFP15045	150x45mm flush pull



Contact Details

5 Holland Dve Melton Vic 3337

P 03 9971 2022

F 03 9746 0966

E enquire@impactsystems.net.au

W www.impactsystems.net.au